

JCB | Helping you Get the Job Done!

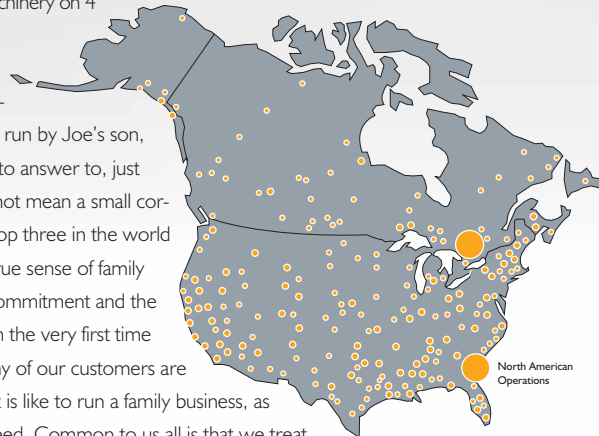


Mr. JCB 1916 - 2001



In 1945, Joseph Cyril Bamford (Mr. JCB) launched the construction and agricultural equipment manufacturing company that bears his initials. He began his business in a garage that measured 12 feet by 15 feet. The world-wide growth of the Backhoe Loader is due to Joe's pioneering work on perfecting this machine in those early days. In just 60 years since Joe founded JCB, the company has grown to employ over 8,000 people and produce over 270 different models of machinery on 4 continents.

JCB is a true family owned and operated business. Today, the company is run by Joe's son, Anthony Bamford. No stock market to answer to, just our customers. Family owned does not mean a small corporation. In fact, we are one of the top three in the world in construction equipment. It is the true sense of family that unites us – the dedication, the commitment and the loyalty that we hope is apparent from the very first time you meet a JCB representative. Many of our customers are family businesses. They know what it is like to run a family business, as they are unique and of a different breed. Common to us all is that we treat customers as people, not numbers. We react quickly to the customers' needs.



Of course, it is no use producing unique products if they do not meet the customers' needs. In this business, machines need the right back-up. Our World Wide Parts Center delivers parts 24/7. Our North American operation has two facilities – one at HQ in Savannah, and one in Canada and our dealer network is spread throughout the country to give you the service you deserve. Our aim is to provide the best customer support in the industry.

JCB machines are known for their style and quality. We have won many awards for quality all over the world. It is our attention to detail, the pride in our work, the desire to be different, the dedication to push ourselves to do better and never being content that drives us forward.

We do not want to be the biggest company in the world as there are already too many faceless corporations. We do however want to be the best. When a customer buys a JCB, we hope they feel a part of our extended family. We will do everything in our power to make this choice the right one for them. To quote Joe Bamford, "the customer pays our wages". At JCB, we never forget this. Joe also believed that success came to those who worked hard and had a sense of urgency. A day never went by without hearing Joe say, "Time is Money", reminding us that this is as true for our customers as it is for JCB. Our customer buys a JCB machine to get the job done.

JCB—Helping You Get the Job Done!®

JCB Headquarters Savannah, 2000 Bamford Blvd, Pooler, GA 31322 Tel: (912) 447-2000 Fax: (912) 447-2299 www.jcb.com

USA 21236-3/08



JCB | TELESCOPIC HANDLER RANGE



Leader and Innovator in Telescopic Handlers

JCB was a pioneer in telescopic handler technology. In 1977, we introduced the telescopic tool carrier concept. Our telescopic tool carriers are designed and developed to do far more than simply lift and place materials. Because they come with a variety of attachments, they are extremely versatile. They're also built to withstand the rigors of bucket use in digging applications.

Today, we are not only the world's largest manufacturer of telescopic handlers we also offer the industry's widest selection of versatile models. Utilizing our expertise and extensive experience, we have refined and enhanced our JCB Loadalls over the years to satisfy the precise needs of diverse users in construction, industrial and agricultural sectors.

The specification and performance characteristics of the machine you need are determined by the job at hand. Only JCB offers a comprehensive choice of lift capacities, boom designs, chassis configurations and attachments that represent the perfect fit for your application. Whatever machine suits your needs best, from the smallest 520-40 to our biggest 550-170, you'll benefit from ultimately reliability, sophisticated design process, high quality manufacturing, and meticulous testing. All supported by JCB's unmatched experience in telescopic handlers.

YOUR FIRST CHOICE



CE FOR MATERIALS HANDLING



FAST FACTS

- Compact dimensions and outstanding maneuverability promote efficient operations in restricted areas.
- The center cab position and low offset boom provide outstanding all-round visibility.
- The telescopic lift and reach performance provides excellent truck-loading capability.
- The four-cylinder engine offers powerful performance and a high power-to-weight ratio.
- The hydrostatic and synchroshuttle transmissions provide excellent performance and effortless control.



Compact Range | Big solutions in small packages

The JCB 520-40, 520-50, 524-50 and 527-55 bring Loadall performance to previously inaccessible job sites. With capacities from 4,000 to 6,000 pounds and lift heights ranging from 13 to 18 feet, these compact performers are the ideal size for working in confined spaces.

All four machines in our model range are fitted with four cylinder engines that generate from 50 to 85 h.p, depending on the model. The 520-50 is equipped with a four-speed synchroshuttle transmission that delivers excellent torque and high travel speeds of up to 20 m.p.h. The 520-40, 524-50 and 527-55 utilize a hydrostatic transmission with high and low range for simple operation and ease of handling. You'll find that high engine output combined with low overall weight equals a high power-to-weight ratio. The hydrostatic drive provides excellent pushing power, particularly at low speeds, as well as the ability to operate the machine using only the accelerator. This ensures smooth acceleration and deceleration, and precise control in confined or restricted areas.

Getting into the cab couldn't be easier. Once inside, you'll find that all controls are close at hand. The view outside is excellent, too. Centrally mounting the cab at the front of the machine gives the operator an unparalleled view of the carriage, both at ground level and throughout the lifting cycle. The low offset boom provides an excellent view of the right side, particularly the rear corner.

Add in a wide range of attachments and additional benefits on the two larger machines that include three steer modes and a single-lever servo control, and you've created a versatile, comfortable and stable solution to the challenge of working in confined spaces.







Lift and Place Range | Efficient job site solutions

If your job requires only a telescopic handler to lift and place a variety of materials, then these four Loadalls are right for you. The high boom design 6,000 lb 506-36, 7,000 lb 507-42, 9,000 lb 509-42 and 10,000 lb 510-56 offer features that will economically satisfy your job site needs. With lift heights ranging from 36 to 56 feet, these models are ideal for masonry and framing applications. These proven, durable Loadalls are designed with high speed booms, sway frames, and safe, comfortable and efficient operating environments.

The frame on each of these machines can be hydraulically leveled, allowing you to safely travel over rough, uneven terrain and level the machine before lifting the materials. In addition, the three larger machines in this range are equipped with rear axle stabilization. This feature locks the rear

axle when loads are being extending outward ensuring a stable base when handling heavy loads. The 510-56 model is also equipped with front axle mounted stabilizers allowing for higher payload capacities.

Inside the cab, you will find low effort servo controls that are arranged in a placing pattern style which forklift operators have become accustomed and familiar with over the years. The boom is extended and retracted through the use of a hydraulic cylinder and two high-strength chains, which results in cycle times faster than competing machines.

Forks and carriages of various sizes are available, including side-tilt and side-shift carriages, along with truss booms and utility buckets. Attachment changes are easy with the quick attach boom head. Just pull the pin, drop the attachment, pick up the new one, replace the pin and you're on your way. These lift and place Loadalls also come with an auxiliary hydraulic service for attachments that require hydraulic operation.



FAST FACTS

- Proven and reliable side engine design with standard JCB powershift transmission.
- Low effort placing pattern servo controls give greater control of the load.
- Rear axle stabilization provides extra stability when working at height. (except 506-36)
- 510-55 equipped with front axle mounted stabilizers offer increased lift capacity at full height.
- Standard auxiliary hydraulic service allows use of side tilt or side shift carriages.



FAST FACTS

- Unique “Z-bar” style geometry provides tremendous bucket breakout forces.
- JCB “Q-fit” quickhitch and standard auxiliary hydraulics allows a wide range of attachments, and increased versatility.
- Complete JCB driveline provides enormous pushing power for bucket use.
- Low effort joystick loader controls and powershift transmission offer effortless control.
- Heavy duty boom and rigid frame design endures the strenuous demands of loader type applications



Ground Engaging Range | Wheel loaders with reach

Now you can go beyond the confines of traditional telescopic forklifts with JCB's rigid-frame ground engaging machines. Attach a bucket and tackle virtually any construction application you have. These rugged, rigid frame telescopic handlers allow you to dig with unrestricted bucket use. You can even dig with the boom extended. The Loadall's boom and front axle mount are designed to withstand the rigors of even the most difficult applications.

The inner boom material extends forward and wraps downward to form the boom head. This is a critical stress point in digging applications. By distributing the stress load throughout the boom and eliminating fatigue at the point where the boom angles downward, the advanced JCB design enhances the machine's ruggedness and dependability.

The “Z-bar” style geometry of the tool carrier linkage and large high placed tilt cylinder are designed to provide impressive breakout forces. This in turn provides excellent bucket filling performance and offers increased productivity in loader type applications.

JCB offers two 100-h.p. rigid frame models, both with a 23-foot discharge height. The 531-70T provides a lift capacity of 6,000 pounds; the 541-70T has an 8,000 pound capacity.

These high performance telescopic tool carriers are equipped with low effort joystick style controls. The controller is the same pattern as found on wheel loaders so operators are immediately comfortable and productive.

With the standard “Q-fit” quickhitch, both Loadall models will satisfy a wide variety of job site demands. Need to remove dirt or other material? Attach the bucket. Need to move building materials up to the second floor? Attach the forks. Why buy two or three specialized machines when one versatile JCB Loadall can handle all of your construction needs?







Tool Carrier Range | Versatile Power and Performance

Whether you are performing bucket work, lifting materials, or operating a range of attachments, the JCB toolcarrier range offers solutions for a wide variety of job site demands.

From waste handling to yard or building applications, the side engine, non stabilized 531-70 offers high payloads and reach plus excellent loader performance.

Our latest innovation is the 535-140 HiViz that incorporates a lower mounted boom pivot point compared to its predecessor. The result of this design is a new level of visibility, maneuverability and productivity that will make it indispensable on today's increasingly space-restricted job sites.

For precision lift and place performance, the 535-140 HiVis up to our flagship 550-170 provides the ideal combination of reach and payload to meet your jobsite requirements. These models



are equipped with heavy duty front stabilizers to ensure safe placement of heavy loads where and when you need it. Each model in the tool carrier range features sway frame control allowing you to level the payload across rough, uneven terrain and squarely position the load prior to placement.

Throughout the tool carrier range, our reliable 85 or 100 h.p. JCB Dieselmix engines send power through a torque converter to the standard JCB powershift transmission. Low centers of gravity and long wheel bases provide added stability in working and traveling across site. Additionally, the selectable 4 wheel steer and crab steer modes offer increased maneuverability.

The tool carrier range features JCB's Q-fit carriage which allows quick and easy attachment changes and compatibility throughout the models. These machines are also equipped with standard auxiliary hydraulics to power a variety of attachments, increasing the flexibility of these versatile machines even more.

Whatever the application, there's a model in the JCB tool carrier range that will provide the power and the ability to help you get the job done.

FAST FACTS

- Q-fit carriage and standard auxiliary hydraulics allow for a range of attachments and increased versatility
- 3 steer modes: 2 wheel steer, 4 wheel steer and Crab steer provide excellent job site maneuverability
- Frame mounted stabilizers offer increased payloads and added stability (except 531-70)
- Sway frame control allows loads to be leveled on uneven terrain for safe travel and placement
- Class leading operator comfort promotes reduced fatigue and enhanced productivity.



FAST FACTS

- Large roof and cab windows give excellent all-round visibility for safe and easy load placement
- Ergonomically positioned controls and instruments reduce fatigue for all-day productivity
- High output heater and optional a/c keep operator comfortable
- Optional loader or placing pattern controls tailor the machine to the job
- Careful grouping of all key controls makes for effortless operation



Total comfort and control

At JCB, we're renowned for producing superb operating environments. From the functional lift and place models to our flagship 550-170 tool carrier, our Loadalls feature one of the largest and roomiest cabs on the market. We design each JCB Loadall model for safety, comfort and ease of use.



Access to our cabs is exceptional, with a wide, two-section door and a sturdy step that provides easy entry into our spacious cab. Our ergonomically designed, fully adjustable suspension seat works in tandem with the adjustable steering column and armrest to offer the most comfortable driving position you've ever experienced. Technologically advanced sound insulation reduces ambient noise to levels unmatched by any competitive machine.

Along with superb comfort and control, our Loadall cabs are designed for enhanced safety.

Expansive windows provide unsurpassed, all-around visibility, while all gauges are located on the right side of the operator's console to ensure that forward vision remains unobstructed. We also positioned angled protective bars on the large roof window to optimize the operator's view of the load at height. Our large front and rear windshield wipers clear dirt more efficiently over a greater area for optimum visibility.

When it comes to controlling these productive, versatile machines, we've made life a lot simpler. We grouped all dials and switches on the front console for ease of use. We also designed our hydraulic, transmission and stabilizer controls for safe, quick and efficient operation. There's also a choice of either forklift or loader control patterns to suite the operator's preference.







Built for the long run

From the compact 520-40 to our largest model, the 550-170, JCB Loadalls are designed and built to provide a long and reliable service life. Sophisticated design processes, quality manufacturing and meticulous testing, coupled with our extensive experience in materials handling, ensure that our machines are consistently dependable and reliable.



We use finite element analysis in the boom and chassis design to eliminate any potential areas of stress. Then, each Loadall undergoes the most intensive testing in the industry. The chassis, boom and other components are subjected to high-stress loadings over a prolonged period of time and the transmission is operated over many thousands of cycles.

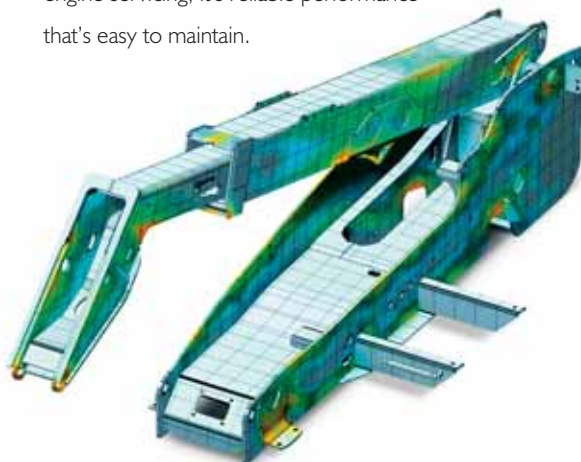
Our method of manufacturing robust telescopic booms is unique in the industry. We create an inverted, U-shaped pressing with a fully welded closing plate and a three-foot overlap within the

sections. The net result is guaranteed long-term performance of your machine.

All JCB Loadalls benefit from an integrated, reinforced boom-nose designed to provide extra strength in this high-stress area.

Yet another characteristic that sets our machines apart is the fact we manufacture our own engines, transmissions, axles and hydraulic cylinders. This gives us greater control over quality and has led to ultimate driveline and hydraulic performance that JCB customers have come to expect.

Our focus is to provide you with a machine that delivers superior and reliable performance. And, with convenient service access and long service intervals of 500 hours for boom lubrication and engine servicing, it's reliable performance that's easy to maintain.



FAST FACTS

- JCB designed and built engines, transmissions, axles and hydraulic cylinders, ensures superior quality and performance.
- Finite element analysis eliminates high stresses in components for long-life structures
- Electrophoretically dipping the cab before painting gives long-term corrosion protection
- Extended service intervals reduce operating costs and easy access simplifies routine checks.



SUPERB OPERATOR'S AREA

- ROPS & FOPS certified cab or canopies to ensure operators safety
- Low step in and out giving easy entry and exit to the machine
- Optional single servo control to operate all functions from one joystick
- High output heater and optional air conditioning keep operator comfortable in all climates
- Excellent all around visibility promotes safety and productivity

PROVEN & DURABLE BOOM & STRUCTURES

- Low profile to provide excellent over boom visibility for the operator
- High breakout forces to increase productivity when using a bucket
- Auxiliary hydraulics fitted as standard to power attachments
- Mechanical or optional hydraulic quick-hitch speed up attachment changes
- Large selection of attachments to suit all jobs: buckets, grapples, fork carriages

POWERFUL & EFFICIENT DRIVELINE

- JCB dieslemax engines provide excellent power and torque
- JCB axles mean reliability is built in from the start
- Hydrostatic 2 speed transmission allows for easy operation (except 520-50)
- 4 wheel steering offers excellent maneuverability in a compact machine
- Full tilting hood providing excellent access to all daily checks and service points

COMPACT WALKAROUND



LIFT AND PLACE WALKAROUND



HIGH PERFORMANCE STRUCTURES

- High speed booms with chain extension increase job site efficiency
- Sway frames to enable an operator to level the machine prior to lifting
- JCB designed and built engine, transmission & axles offer high performance and reliability
- High boom design gives excellent under boom visibility to the operator
- Axle mounted stabilizers on the 510-55 increases max lift capacities
- Rear axle stabilization increases machine stability (except 506-36)

SUPERIOR OPERATORS STATION

- Available in three packages canopy, cab and deluxe cab to meet all requirements
- Optional Air Conditioning keep operators comfortable in hot environments
- Servo controls in a placing patten reduce operator lever effort and fatigue
- Lower level structure makes entering and exiting easier on the operator
- ROPS and FOPS certified keep the operator safe at all times
- Narrow boom nose gives additional visibility to the forks

WIDE RANGE OF CARRIAGE OPTIONS

- Standard carriages available from 48" to 66" wide to match the job in hand
- Side tilting and side-shifting carriages also available for better load positioning
- Quick attach system make attachment changes quick and easy
- Single auxiliary hydraulics as standard on all models

ADVANCED OPERATORS AREA

- Well appointed interiors make for a comfortable work environment
- Ergonomically placed joystick and controls ensure a comfortable work position
- Optional air conditioning keep operators comfortable all year around
- Multi adjustment, suspension seat ensure all sized operators are comfortable

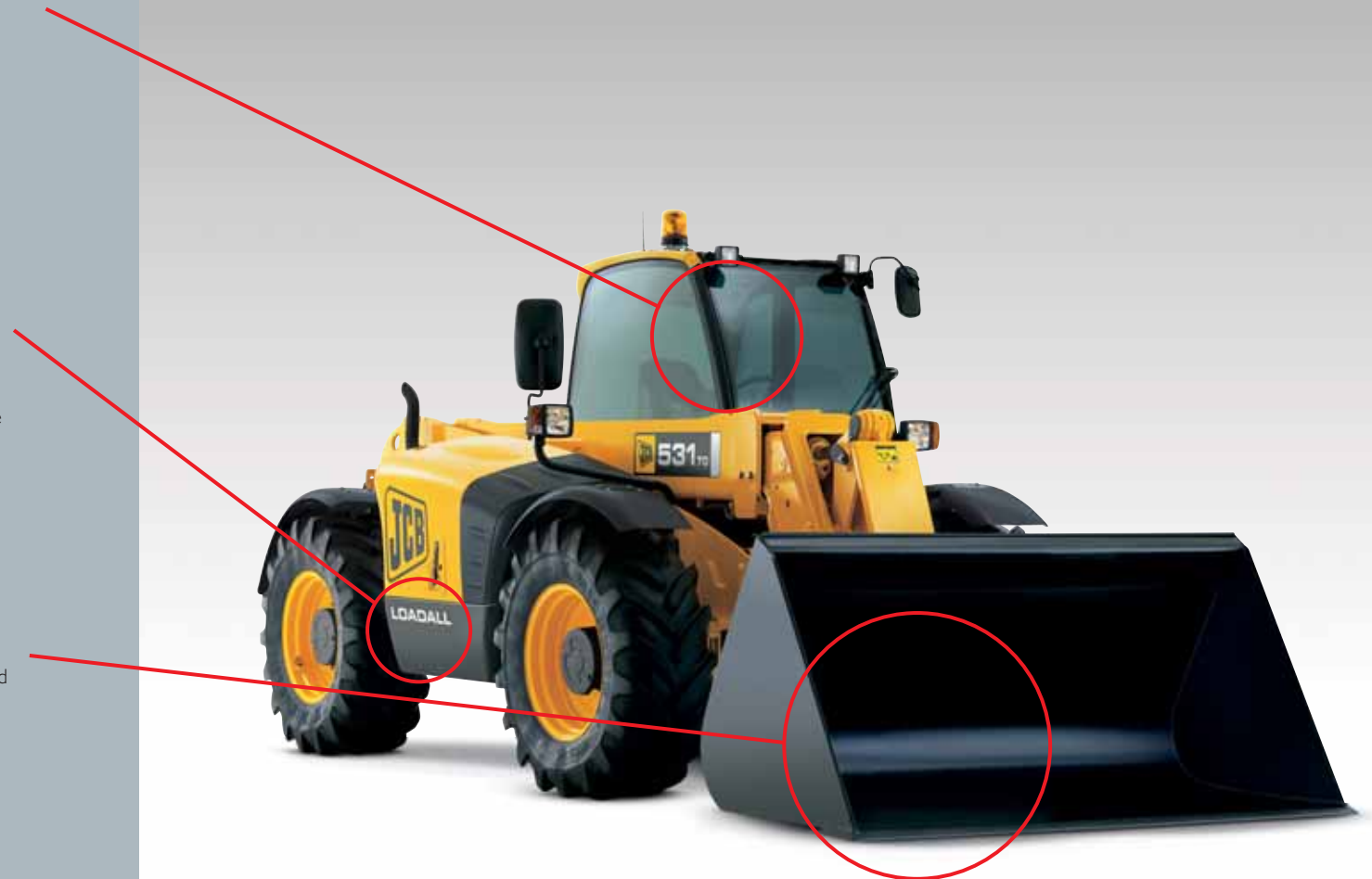
HIGH PERFORMANCE DRIVE-LINE

- JCB Dieselmix engines provide abundant power and torque for digging applications.
- JCB designed, built and proven powershift transmission as standard
- JCB axles complete the drive line to give assured quality and reliability
- Complete JCB drive line is designed and built for the machine to give optimum performance

UNRIVALLED BUCKET CAPABILITIES

- Z-bar style loader geometry provides unmatched bucket breakout forces
- All hydraulics cylinders are high up and out of the dirt for added protection
- JCB Q-fit makes attachment changes quick and effortless increasing efficiency & versatility
- Large selection of buckets, grapples, carriages and more to tackle a wide range of jobs.

GROUND ENGAGING WALKAROUND



TOOL CARRIER WALKAROUND



UNMATCHED VISIBILITY

- The low boom design gives unmatched over boom visibility all around
- New 535-140 HiViz low boom pivot point enhances rear visibility
- Large all around glass cab ensures 180° sight lines from the operators seat
- Vast roof glass with tilted protection bars give great visibility to loads at height

NEW HEIGHTS OF DURABILITY

- Lift heights ranging from 23' to 55' over four models: 531-70 to the 550-170
- Boom extension achieved by hydraulic cylinders for added durability
- Frame mounted stabilizers provide extra stability (except 531-70)
- 6,000 lbs max lift to 10,000 lbs to ensure there is a machine to match your job
- Sway control standard on all models to level the machine prior to lifting

VERSATILE TOOL CARRIER CONCEPT

- Standard JCB 'Q-fit' and auxiliary hydraulics increases versatility
- Optional hydraulic 'Q-fit' makes attachment change even easier without leaving the cab
- With the ability to dig, JCB tool carriers can tackle various construction site duties
- Attachments from digging & loading buckets, fork carriages, truss booms means the machine never stops working.

CONSTRUCTION LOADALL RANGE

COMPACT

520-40



520-50



524-50



527-55



Maximum lift height	ft-in (mm)	13'3" (4035)	16'5" (5000)	16'5" (5000)	18'0" (5500)
Maximum lift capacity	lb (kg)	4000 (1800)	4400 (2000)	5000 (2268)	6000(2721)
Maximum forward reach	ft-in (mm)	8'6" (2590)	9'9" (2820)	9'6" (3300)	10'10" (3050)
Lift capacity at full reach	lb (kg)	2000 (900)	1650 (750)	2750 (1250)	2300 (1050)
Overall height	ft-in (mm)	6'6" (1970)	6'11" (2120)	6'11" (2100)	6'11" (2300)
Overall width over tires	ft-in (mm)	5'1" (1585)	6'0" (1840)	6'7" (2000)	6'7" (2230)
Overall length to front carriage	ft-in (mm)	11'1" (3380)	11'9" (3590)	12'10" (4000)	13'1" (4620)
Turn radius over tires	ft-in (mm)	10'0"(3050)	10'2" (3100)	9'10" (3000)	9'10" (3380)
Total weight (unladen)	lb (kg)	9700 (4400)	10736 (4870)	12125 (5650)	12456 (6100)
Tires		12x16.5 10ply	10.5/80x18	12.5/80x18	375/75 R20 / 15.5/80-24
Engine (gross)	hp (kW)	50 (37.5)	77 (57.5)	85 (63)	85 (63)
Engine (optional)	hp (kW)	—	—	—	-

LIFT AND PLACE

GROUND ENGAGING

506-36

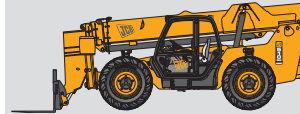
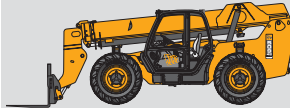
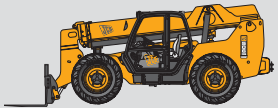
507-42

509-42

510-56

531-70T

541-70T



36'4" (11070)

42'0" (12800)

42'0" (12800)

56'0" (17070)

23' (7000)

23' (7000)

6000 (2722)

7000 (3176)

9000 (4084)

10000 (4537)

6000 (2722)

9000 (4090)

24'0" (7310)

28'0" (8530)

28'0" (8530)

42'0" (12800)

12'6" (3840)

12'6" (3840)

6000 (2722)

6000 (2722)

6000 (2722)

3000 (1360)

3000 (1360)

3500 (1590)

8'3" (2510)

8'3" (2510)

8'3" (2510)

8'10" (2692)

8'2" (2490)

8'2" (2490)

7'10" (2388)

7'10" (2388)

7'10" (2388)

8'1" (2471)

7'4" (2230)

7'4" (2290)

19'5" (5918)

21'3" (6477)

20'7" (6274)

21'7" (6579)

16'4" (4990)

16'4" (4990)

14'6" (4420)

13'9" (4191)

13'9" (4191)

14'1" (4293)

12'2" (3700)

12'2" (3700)

20270 (9193)

21300 (9660)

22430 (10172)

29900 (13560)

15215 (6900)

16578 (8160)

13.00/24

14.00/24

14.00/24

17.5/25

15.5/25

15.5/25

85 (63)

85 (63)

100 (74.2)

114 (85)

100 (74.2)

85 (63)

100 (74.2)

100 (74.2)

CONSTRUCTION LOADALL RANGE

TOOL CARRIER

531-70



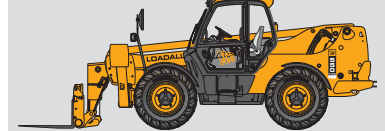
535-140 HiVis



550-140



550-170



Maximum lift height	ft-in (mm)	23' (7010)	45'2" (13780)	44'3" (13500)	54'9" (16700)
Maximum lift capacity	lb (kg)	6000 (2722)	8000 (3629)	10000 (4535)	1000 (4535)
Maximum forward reach	ft-in (mm)	12'6" (3840)	31'10" (9700)	30'8" (9390)	41'5" (12600)
Lift capacity at full reach	lb (kg)	3000 (1360)	7000 (3175)	2500 (1133)	1000 (453)
Overall height	ft-in (mm)	8'2" (2490)	8'6" (2590)	8'6" (2590)	8'10" (2690)
Overall width over tires	ft-in (mm)	7'4" (2230)	7'9" (2350)	7'9" (2350)	8'0" (2440)
Overall length to front carriage	ft-in (mm)	16'4" (4990)	20'5" (6230)	20'6" (6250)	20'10" (6360)
Turn radius over tires	ft-in (mm)	12'2" (3700)	12'4" (3750)	13'5" (4100)	13'5" (4100)
Total weight (unladen)	lb (kg)	15215 (9410)	23986 (10880)	29934 (10858)	26810 (12160)
Tires		15.5/80-24	15.5/80-24	15.5/25	17.5/25
Engine (gross)	hp (kW)	85 (63)	100 (74.2)	100 (74.2)	100 (74.2)
Engine (optional)	hp (kW)				

JCB ATTACHMENTS

SIDESHIFT OR SIDETILT CARRIAGE



SIDESHIFT OR SIDETILT CARRIAGE

- Speeds up operations by minimizing machine repositioning
- Independent fork positioning from within cab
- Particularly effective for precision placing of the load
- Available for 535-125, 535-140, 540-140, 540-170 (only with clear view carriage)

TIPPING SKIP



TIPPING SKIP

- Strong lightweight design
- Ideal for building site and factory applications
- Fork mounted for fitment to a number of machines
- Fork entry from rear or sides for greater manoeuvrability
- Fork and skip lock safety mechanisms

CRANE HOOK



CRANE HOOK

- Ideal attachment for safe lifting
- Fork mounted for fitment
- 4 tonne lift capacities available
- Secure system for locking to forks
- Lifting test certificate included

TRUSS BOOM



TRUSS BOOM

- The safe alternative to manual handling
- Quickhitch compatible
- 12' and 12'6" Booms available
- 800lb, 1400lb and 2,000lb capacities

6-IN-1 BUCKET



6-IN-1 SHOVEL

- Gives even greater versatility to your JCB Loadall
- In forward operation, digging, loading, grabbing and dozer blade options
- In reverse mode, grading or spreading options
- Replaceable wear parts prolong the life cycle
- Quickhitch compatible for rapid attachment changeover
- Available for 531-70 and 541-70

SWEeper COLLECTOR



SWEeper COLLECTOR

- Heavy duty one piece canopy for maximum durability
- Class leading visibility
- Floating mounting frame for increased sweeper output
- Combination steel and polypropylene brush
- Quickhitch or fork mounted fitment

GENERAL PURPOSE BUCKET



GENERAL PURPOSE SHOVEL

- JCB-designed for maximum performance and durability
- Drilled to accept toeplate or teeth
- Quickhitch compatible
- Uses JCB Loadalls excellent bucket capability

GRAPPLE BUCKET



GRAPPLE BUCKET

- Ideal for site and storm clean up
- Quickhitch compatible
- Drilled to accept reversible toeplate
- Various capacities offered to suit application